

Volume 21
Issue 5



Evergreen Piecemakers Quilt Guild NEWS

www.evergreenpiecemakers.com

MAY
2011



Dates to Remember

Joyful Quilters

Friday May 6th
Calvary Chapel South
10-2

Business Meeting

Monday May 9th
at 7pm

Quilt Show

Kent Commons
May 20th & 21st

Program Night

May 23rd
at 7pm

President's Corner

From: Nan and Christine

At our house today the sun shone (briefly), it thundered and rained, then hailed, the wind blew and we had a high of 41 degrees. Maybe this year we will skip spring and go straight to summer. Welcome back snow birds!

It's getting exciting the closer we come to our quilt show. I've made a list for myself;

1) get fat quarters to Elizabeth,

2) get registration forms to Yvonne (get those hanging sleeves sewn!)

3) get volunteer duties on calendar (receive quilts Friday morning, hostess on Saturday, membership booth on Sunday)

4) Deliver desserts to Dessert Cafe & soup for the workers. Have you made your list yet?

Besides our quilt show, Mary is waiting for our recipes! And how about that block of the month? Boy, it sure is an exciting time to be a member of EP.

On top of all that an announcement of a new quilt store opening in Kent; by one of our own! **Congratulations Alice Marshall!**

We wish you great success.



Running Stitch Fabrics

INSPIRE, EDUCATE, CREATE

Opening May 3, 2011 at 10 a.m.

213 1st Ave S Kent, WA 98032

Hours: Tuesday - Saturday 10 a.m to 6 p.m.

Hours: Sunday 11 a.m. to 4 p.m.

Contact: 253-277-2248

info@runningstitchfabrics.com

2011 Officers & Chairpersons

The Evergreen Piecemakers is a non-profit organization and exists to promote and preserve the art and craft of Quilting.

Who to Contact

Co- President	Nan Naubert	253.475.4600 ext 8872
Co-President	Christine Palmer	253.529.1378
Co-Vice President	Dona Dovark	253.779.0219
Co-Vice President	Gail Christianer	206.938.1791
Treasurer	Ginger Bowne	253.631.0694
Secretary	Elizabeth Larson	253.486.2378
Library	Alice Marshall	425.235.0187
	Yvonne Hamilton	425.271.5847
Block of the Month		
Communications Liaison	Ada Kirmser	253.951.8089 ada@musictrader.com
Membership	Aletha Gilbreth	253.852.4188
Sunshine	Linda Zarges	253-833-6817
Community Service	Judy Gage	206.772.2532
	Linda Zarges	253-833-6817
Web Mistress	Sylvia Jacobus	253.852.6596
Newsletter Editor	Nadeen Ward	206.915.1603 nadeensew@clearwire.net
Show Me How	OPEN	
Raffle Quilt '11	Irene Moss	253.833.2511
Quilt Standards	Barbara Frazier	253.813.5647
Gift & Quilt Gallery	Melissa Santiago	253-639-7536



Quilt Show Info

*The 2011 EP Quilt Show will be held at the
Kent Commons Facility
May 20-21, 2011*

The Quilt Show Team is working hard to make this years show a fun time for all. If you have any questions regarding the show please contact

Gail Christianer: 206-938-1791 or
Ginger Bowne: 206-271-0694.

If we can't answer your question, we will direct you to someone who can.

Registrations should already be in to
**Yvonne Cottell or Mary Allen
by April 25th, 2011.**

Volunteers are still needed to work the show and to provide baked goodies and we are still in need of Small Quilts and fat quarters donations.

For additional information please see the quilt show page on the Evergreen Piecemakers Web page:

www.evergreenpiecemakers.com



SUNSHINE

Our members mean so much to us and when they're hurting, we would like to let them know we miss them and are thinking of them.

Sometimes waiting until the guild meetings delays getting cards out to members in a timely manner. So please, whenever you hear of someone who needs encouragement, please don't hesitate to call me or e-mail me with their name. I have a full stack of beautiful cards just waiting to brighten up someone's day!

Linda Zarges, 253-833-6817 Quiltsome@comcast.net or ronvz@comcast.net

TAKING CARE OF BUSINESS

Submitted By Elizabeth Larson

General Meeting of Evergreen Piecemakers for April 11, 2011

Treasurer: There is a total of \$35,300 in all five accounts. Income this year in dues is \$1,600, raffle tickets \$250, quilt show \$1,600 (mostly vendor fees.) Spent \$2,100 on the rental fee for Kent Commons. Working on filing tax report.

Programs: April evening program is a binding class taught by Yo Wright. May – Awards from the quilt show. June – stash cleaning party. The idea to skip it was brought up and voted on. We will have a program instead.

The last newsletter is approved as corrected as the dates for meetings were wrong. Moved by Gail Christianer, approved by Shirley Durgan.

Quilt Show

- April 25th is the last day to turn in registration. If you intend to put in a large quilt (large bed/duet) **email Yvonne Cottell** because those quilts have to be stabilized in a certain way so it would be great to know in advance.
- Of the people who participated in the round robins, how many are going to have their quilts ready to participate in the show?
- There will be a separate section to show these in the group category.
- Quilts made from the block exchange from Seabeck will also be shown.
- Challenge quilts with any color green "My Northwest" will have a section.
- So far, 11 registration forms have been turned in, and another uncounted group tonight.
- Ribbons won't be put on the quilts at the show because it's a peer judging process so results will be tabulated on Sunday and ribbons will be ready on Monday. Everyone who put a quilt in the show needs to bring them to the meeting on Monday so ribbons can be awarded. If you won't be there that night, send your quilt with someone else. You need to pick up your quilt Sunday night after the quilt show as there is no way to store them.
- People need to sign up to bring cookies, cakes, and bars to the dessert café as those are the three best sellers. Presale tickets are available for \$5.

Raffle tickets for the 2011 quilt are available for you to pick up and sell.

Membership – Directories are at the printer. Ada sent an email, Marilyn Green's husband passed away. People out of state aren't getting their directories. The board decided last year not to mail directories out but if people live outside of the area then they can be mailed.

Joyful quilters – Received a thank you card from a breast cancer survivor that received one of our quilts. For the next three months, the 4th Sunday's of the month fall on busy days so quilting at Trains won't be taking place. Saturday June 18th, there will be a quilt in potluck at the church Joyful Quilter's meets in.

Library – has some workshops on dvd, piecing, quilting, etc. Joyce gave a copy of her new book that will be available at the next meeting

BOTM – The block for May is a Split Nine Patch. Modern Glass was the block for April, 24 blocks were turned in, **Amber Wittmayer** won them.

APWQ – April 28th is the last day to submit a quilt for the August quilt show. Membership forms are available. Sections for the show are collective threads – large quilts, marvelous minis – miniature quilts, starlight starbright – star themed quilts.

Retreats – September Dumas bay – balance due may 1st

Cook book – 68 recipes have been turned in but we need a minimum of 149. Mary Allen's Arizona quilt guild made books that took \$2.50 to publish. Mary Allen is collecting recipes

Round Robin – Three groups are going. We will have a reveal of 15 Round Robins at the end of this year

Fons and Porter – if you haven't received your thread, subscription or notification, let Yvonne Cottell know

A Quilter's Journey
~Quilt Show~

Presented by
Evergreen Piecemakers

May 21-22, 2011
Saturday 10am-5pm & Sunday 10am-4pm

Merchant Mall, Gift Gallery,
Special Displays of Round Robin and
9-Patch Exchange Quilts, Small Quilt Sales,
Fat Quarter Raffle, Opportunity Quilt,
Show-Me-How Demos,
Dessert Cafe

Featured Quilter: Barb Frazier
Kent Commons
525 Fourth Ave. N., Kent, Wa
(West of Kent Station)
Donation: \$5.00

GUILD COOKBOOK - We Need Recipes!

We're still making plans to present a proposal to the Guild Board of Directors for a Guild Cookbook. Recipes are still needed. A really good selling cookbook has about 300 recipes in it.

I think we could ask more than \$5 each if we had that many.

Send or give me recipes in any form you wish - e-mail, letter, hand written - doesn't matter - then we can proceed with our plans. As of mid-April we're about half way to the 300 goal. I know there's lots of good cooks out there!!! The last date for entry of a recipe is the July business meeting of the Guild. Also, you can submit 2 names per recipe. For example, if I wanted to list myself and my mother I could or I could have my name and "Grandma Jean" as an example or "Aunt Billie". However, we can't have anecdotes or stories with the recipes. That cost a lot more to publish.

I'll have a complete list of the recipes and names at each Guild meeting from now until July.

If you want to correct a recipe or add a name, you'll have an opportunity at that time to do that.

Or if you've already sent in a recipe and know you want to add a name, just e-mail me and I'll add it to your recipe. Let's get behind this and maybe we can publish a real keepsake for the Guild.

Mary Allen marynbob@juno.com

"Tell Me How"

Sewing a Scant ¼ inch Seam

There's nothing like admiring a beautiful quilt to feel inspired to quilt one of your own. While there are many skills involved in making a quilt, none is more important than sewing a consistent ¼ inch seam. All quilts are designed to use a ¼ inch seam allowance, so for the whole quilt to be sewn together as easily as a puzzle fits, it is important to use an accurate ¼-inch seam allowance on all the seams.

Often you'll see the term, "use a scant ¼ inch seam" and wonder what does that mean or why is that so important? Some even use the term "one thread shy of a ¼ inch." Fabric and the thickness of the thread will "take up room" in the seam allowance as the seam is pressed. To account for this bulk, quilt pattern instructions will often specify using a "scant ¼-inch seam".

Just how does one account for this "scant" so the finished block dimension measures out as designed? There are a couple of methods for achieving the scant ¼-inch seam, however, for both methods, it is important to sew a test block to make sure your seam allowance is accurate.

The first method uses an adhesive type bumper strip placed in front of the presser foot. The bumper strip helps align the fabric to the correct ¼ inch distance from the edge of the fabric to the needle as it is being sewn.

To attach the bumper strip, use a ruler especially made to determine the ¼ inch distance from the needle to the right edge of the fabric. Place the ruler under the presser foot and drop the needle to just touching the marked ¼-inch indicator on the ruler. Make sure the ruler is aligned straight to the needle and lower the presser foot to the ruler. Next place the bumper strip to the right side of the ruler, making sure the bumper strip stays straight in relation to the needle position and stops just before the presser foot. Now lift the presser foot, raise the needle, and remove the ruler. (The presser foot when lowered should rest flatly on the sewing bed without touching the bumper strip.)

The second method is to use a ¼-inch foot made for your machine. The ¼ in foot will likely have a metal bumper on the right edge of the foot. The fabric is fed to the needle with the right edge of the fabric against the metal bumper.

(With this method, you may need to move the needle position to the right one notch to achieve the "scant ¼ inch" seam.)

When using the ¼ inch foot, the fabric must be fed carefully up to the foot in a smooth, straight motion: that is, not wiggling the fabric in back and forth from the left to the right.

Regardless of which method you choose to ensure a ¼-inch seam, a test block must be made. Sew three, 2-inch strips together. (The strips can be 6 inches long.) When the strips are sewn and pressed, they should measure exactly five inches across when measured along the length at the beginning, middle and end of the strip test block. If your test block does not measure five inches across the three strips, look carefully at the seams. Are there seams straight or wobbly?

If the seams are straight, check to see if the fabric was cut accurately. If both seams and fabric were sewn and cut accurately, then re-measure the distance from the needle to the bumper edge where the fabric is fed to the machine and adjust as necessary. Repeat sewing the test block to confirm the proper adjustments have been made.

Now that you have an accurate ¼ inch seam, you can confidently sew your blocks together.

From time to time you will have to recalibrate your ¼ inch alignment, but soon you will be able to spot when you do not have a true ¼ inch seam.

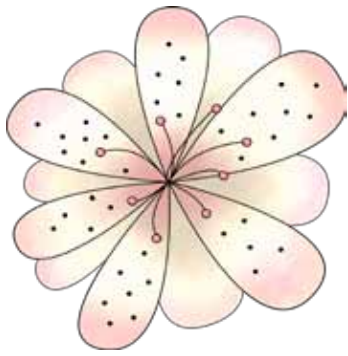
Just keep thinking: "Close enough is not good enough!" and you'll enjoy a successful quilting experience!



Reference: YouTube demo:

Why and How to Sew With a Scant 1/4" Quilt Seam, Marci Baker of Alicia's Attic

Copy and paste this link in your browser bar: <http://www.youtube.com/watch?v=DSCBzwJ1IB4>



**Happy
May
Birthday!**

Kim Ramsey	5/3	Ruth Clapp	5/17
Glenda Frantz	5/3	Jeannine Larson	5/22
Kay Davis	5/6	Lou Sawyer	5/22
Tammy Lester	5/13	Ruthann Lindsay	5/29

JOYFUL QUILTERS

**Joyful Quilters Next Meeting
MAY 6th 10 AM to 2 PM**

On the fourth Sunday of the month we invite you to join us at Trains Quilt Shop in Tacoma for an afternoon of free motion quilting on Donna's two long arm machines. Please reserve your spot by signing up at guild meetings or by e-mail to Judy Gage.

Joyful Quilters 2011 Meeting Dates

Calvary Chapel South

- May 6 and 20 June 10 and 24
- July 8 and 22 August 5 and 19
- September 9 & 23 October 7 and 21
- November 11 December 9

Joyful Quilters contacts:

Judy Gage - Agage12345@aol.com

Linda Zarges - Quiltsome@comcast.net

The location is room #11 at Calvary Chapel South, the old Kent Elementary School across from city hall and the police station in Kent. Parking and entrance is at the north end of the building.

JOYFUL QUILTERS SATURDAY QUILT-IN

JUNE 18th 10 am-2:30 pm

Come and join us as we get those tops quilted! We also will be gathering your favorite recipes for the Guild Cookbook. This will be a potluck lunch event so bring a favorite prepared dish along with its recipe. All recipes will be turned over to Mary Allen for the cookbook project. Sounds like a "YUMMY" good time.

Joyful Quilters will provide pinned quilts ready for you to give them personality. Bring you sewing machine, free motion foot, and quilting gloves. We also have a supply of threads or bring your own. There will be surprises!!! Come and socialize and sew together.

Community Service quilting at Trains and Fabrics in Tacoma is cancelled for May and June due to the May Quilt Show and the June Shop Hop. Sunday, July 24, 11 am-4 pm will be our next long arm quilting day. Sign up at Guild meetings.

Keep bringing in those orphan blocks and 2 1/2-inch strips. We are planning a special event for coordinating the orphan blocks and using them to create beautiful quilt tops. Thank you for your support.



General Retreat Information

The Guild sponsors a number of retreats throughout the year.

Retreats are a wonderful way to pamper yourself while working on your own projects (finishing UFOs, starting a new project or working on something else). Retreats are stand-alone events whose costs are fully paid by the participants and require a deposit to hold a spot, with payment of the balance prior to the event.

Each retreat has a different refund policy.

Retreats generally fill up fast there are always waiting lists.

The Guild treasurer manages any funds associated with the retreats but those funds are not part of the operating budget. Retreats are open to Guild members first and then if there are spaces left to fill by a certain date they are opened to non-members.

Below is a list of some of the current retreats.

Dumas Bay Centre in Federal Way: Enjoy beautiful views of Puget Sound, good lighting, a comfortable quilting room, dinner and breakfast from Friday through the last day of the retreat. You'll have your own private room with half bath. The showers and tub are down the hall. You can enjoy walking the grounds and beach access is nearby. Although you'll feel like you're a million miles from home, you'll have only a short commute.

Several retreats are at Dumas Bay:

Contact the retreat coordinator for more information (exact dates & cost):

February: President's Day weekend,

4 day retreat: Contact **Mimi Miller, 253-549-0709** or miller.mimi@gmail.com

May: Memorial Day weekend,

4 day retreat. Contact **Barbara Frazier 253-813-5647** or barbarafrazier@earthlink.net

September: Labor Day weekend.

4 day retreat. Contact **Linda Zarges, quiltsome@comcast.net** or **Carol Stevens, cinthewoods@comcast.net**

October: Usually the 3rd weekend.

3 day retreat. Contact **Lou Sawyer, dakotaboos@msn.com** (**Note change**)

December: Usually the 1st weekend.

3 day retreat. Contact **Sandy Burroughs, burroughs_s@comcast.net**

Other retreats:

Camp Huston at Gold Bar: The Guild has been going to Camp Huston the 1st week in May for over 25 years. Currently full, contact **Mary Allen, marynbob@juno.com**, if you are interested in being put onto the wait list.

Seabeck on Hood Canal – Held in October, currently full, contact **Dana Ekblad, danaekblad@comcast.net**, if you are interest in being put onto the wait list.

**C'mon--GIVE
YOURSELF A
TREAT!**





ADVERTISING RATES

Advertising rates are for commercial enterprises

Full Page Ad: \$58.00.....9" h x 7"w

Half Page Ad: \$32.00.....4 1/2" h x 7" w or 9" h x 3 1/2" w

Quarter Page Ad: \$18.00.....4 1/2" h x 3 1/2" w

Eighth Page Ad/Business Card: \$10.00.....2 1/4" h x 3 1/2" w OR

\$60.00 for one single ad to be repeated for twelve months.

CLASSIFIED ADVERTISING RATES

Classified advertising is for private non- business individuals.

EP Members: \$.20 word Non-EP members: \$.40 word

INSERTIONS

Pre-Printed, one side: \$25.00 Preprinted, two sides: \$40.00

DEADLINES

Submission of articles • ads • insertions must be received by the 15th of each month



**Evergreen Piecemakers
Quilt Guild**
P.O. Box 5817
Kent, WA 98066

Meeting Location:

First Christian Church
11717 SE 240th ST
Kent, WA 98030

Meeting Schedule

Business Meeting: 2nd Mondays ~ 7:00 pm
Program Meeting: 4th Mondays ~ 7:00 pm

