



**MARCH
2011**



Dates to Remember

- Joyful Quilters
Friday March 11
Calvary Chapel South
10-2
- Business Meeting
Monday March 14th
at 7pm
- Joyful Quilters
Friday March 25th
Calvary Chapel South
10-2
- Program Night
March 28th
7pm
- Joyful Quilters
Sunday, March 27th
At Trains
- Joyful Quilters
Friday April 8th
At Calvary Chapel South
10 -2

President's Corner

Nadeen has tried valiantly to get the newsletter out without much cooperation from the new board. I'm afraid I have to take full responsibility for it. So here is my apology to all the EP members and to Nadeen with still yet another promise to get whipped into shape and to get all written communications to her in a timely manner. Our newsletter is beautiful but cannot be sent without!

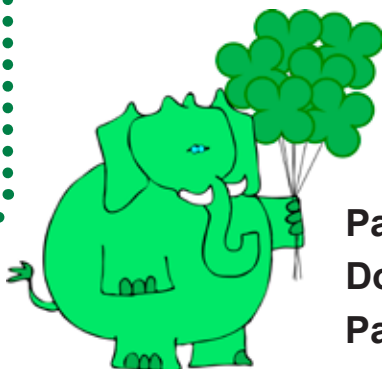
At the second board meeting there was discussion about membership. Our membership has been falling and that leaves us with less revenue. It was felt that it was necessary to also recruit some younger members. Several board members had some good ideas; one is our upcoming quilt show could be an opportunity for us. This will be discussed at our next business meeting where we will welcome all input and ideas.

Sew Expo is always an exciting time. I sure hope many of you can go to see all the newest and greatest in sewing.

It looks like we will be snowless for the event!

Hope to see some of you there.

Christine Palmer



Happy March Birthday!

Pat Michelsen	3/2	Rosy Carolan	3/3
Dona Dvorak	3/4	Carol Johnson	3/15
Patty Bushorn	3/23		

TAKING CARE OF BUSINESS

By Elizabeth Larson

General Meeting of Evergreen Piecemakers for February, 2011

Budget – check book balanced. **Total Balance** (general fund, retreat, joyful quilters, etc) \$23,926.37
Total Income - \$2040
Total Expense - \$374.68
Membership - \$1185 so far this year
Spreadsheets sent to those who requested it.
Budget will be voted on at next business meeting

Programs – February – Gayle Pulley, fabric painter

Quilt Show – *Fill out an advanced notice form* if you want to enter a quilt in the show. If you have questions about the categories please ask. The forms didn't come through properly on the website so they may need to be reposted, Yvonne has copies.

There will be a visual map/layout on the programs for the show, in order to do this properly,

April 25th is the absolute last day to enter quilts but please give as much advanced notice as possible.

Dates are: Saturday May 21st (10am-5pm) and Sunday May 22nd (10am-4pm.) Drop off quilts on the morning of Friday the 20th between 8am and 1pm and they will be hung that afternoon.

If you can't make the drop off, delegate with someone else as long as it has the form attached. **Some tickets will be preprinted to give out to friends and coworkers. These tickets can be bought starting in March for \$5. Big and small flyers are available to pass out.**

Irene – APWQ (used to be APNQ) had to enlarge the region to just about every state/province west of the Rocky Mountains.

The quilt show is going to be held at the greater Tacoma Convention Center, call for entries.

New brochures are available. Can do 1, 2, or 3 year membership.

Volunteers are needed, let Irene know by emailing her.

Live auction, silent auction, in living color quilts (on the website), challenge quilt (info on website), red/white/blue star quilt display – if you have one to enter, information is on the website. Anyone can enter a quilt, you don't have to be a member, though you have a lower cost to enter the quilt if you are.

Show is August 26th through 28th. Volunteers get free admission. Judged & juried show with lots of vendors. 3 year membership \$70, 2 years for \$45, 1 for \$25. **Evergreen Piecemakers can show the raffle quilt and sell tickets at the show.**

Joyful Quilters – challenged to make blocks with strips and squares. **The winner was Nan with her 2.5" squares,** she won fat quarters. The next meeting on February 25th, the blocks will be put together into tops. **Pillowcase bags are being made, there are a few kits left. Meetings at Trains are every 4th Sunday of the month. Drawing for January, Yvonne Cottell won, February – Dottie Goodwin won \$10 certificates to Trains.**

Raffle Quilt – 2011 – has been taken to a couple other quilt groups. Rose will take it to a guild in March. May take it to Dumas Bay to see if we can sell tickets to the theater goers.

2012 – still working on it.

Membership – One new member, Marty Berland, who found out about the guild on the internet.

Sunshine – Kay Taylor's husband passed away. Jeannie Hunt's husband had triple bypass surgery.

Block of the Month – Collected 25 hearts for February, Tammy Lester won them. **Next month's block is a Snail's Trail. The pattern can be found on the website or you can sign up for the mail list to be emailed the pattern every month.**

Round Robin – In October we showed the completed Round Robins from last year. **There is a sign up sheet** if you are interested in participating this year. It's a growing experience because you may have to work with different fabrics or different tastes than you're used to. Once you pass on your center block, you can't have any expectations of what it will look like when you get it back. You can provide fabrics if you want or you can leave it completely up to the rest of your group. Guidelines are available. Depending on your group it will either be a row quilt or medallion. You're usually give two months for each portion. **Assignments will be given out in March.** If you've taken a class and only finished one block, it's perfect to use for the center of a Round Robin.

Retreats – April 15th – 17th Dumas Bay run by Vicki G still has openings. Barb Frazier is handling it while Vicki's out of town.

October Dumas Bay is run by Lou Sawyer, not Jeannie Hunt anymore.

Memorial Day Dumas Bay is full as of now but tends to lose someone as it gets closer so sign up for the waiting list if you're interested.

Satellite Groups – Thursday group is at Melody Crust's

Fons and Porter – subscription for \$15, comes with free gifts including pamphlets and Sulky thread. Can be renewal or new subscription. Deadline is March 31st.



"Tell Me How"



Get the Look you want:
Thread size vs. Needle size = Stitch size
for Hand Quilting your quilt.

By Yvonne Cottell

There are lots of beautiful threads out on the market now. But you might be confused as to how to use them in your hand quilted projects. What needle to use with each size thread can also be confusing. It really depends on what look you are after and what kind of project you are working on. The thinner the thread (40wt), the more traditional the look, and the tinnier the stitches. The thicker the thread (30wt, 12wt, etc), the more it sits up on top of the fabric. It makes for a more rustic or country look. At the same time, your stitches usually need to be larger to accommodate the thread size. Here are a few basics that I have learned over the years . . . mostly from trial and error.

The standard size quilting thread is a 40/2 weight cotton. It sinks nicely into your fabric but still give a hint of depression to your finished product. You can get tiny stitches depending on what size needle you use. That size thread weight can easily fit into a size #10 or #11 Between needle. It's a bit of a push to fit into a #12 between, which is the really small needle, but with perseverance, it can be done. You can find Betweens in a Big Eye needle, but I've never seen #12's in Big Eye.

The thread weight number decreases as the thickness increases. So a 30 weight thread is going to be thicker than a 40 weight thread. There are some beautiful variegated threads out there with 1 inch repeat of different colors (Superior Threads King Tut, Sulky Blendables Long Staple, and Signature Egyptian Long Staple Cotton, to name a few) that can be used to Hand Quilt your project and add another element to the design. They come in different weights from #30, #20, and #12.

So as the thread gets thicker, it becomes tougher to shove it into the eye of a needle. You have to find the right sized needle, with an eye that will accommodate the thickness of thread you are using to achieve a certain look in your quilt.

I've found that by using a #10 Big Eye needle I can usually get up to a #12 weight thread through the eye. Richard Hemming & Son's and John James both have #10 Big Eye needles that will easily thread your thicker threads. I usually try to use a John James #10 Big Eye if at all possible when I use #8 Perle Cotton to hand quilt my quilts, but I have been known to use a #10 Sharp. However, the shaft is longer and thicker, which means your stitches are going to be larger.

Once you have determined what look you are wanting for your project, choose a thread weight that will compliment that project and then find the right needle to hold that thread. That way you get the look you want for the project you are putting so much time into.

Happy Hand Quilting
Yvonne Cottell

Quilt Show Categories

Large Bed Small/Medium Bed	LB S/MB	Each side exceeds 80". Any side 80" or less.
Large Duet Small/Medium Duet	LD S/MD	Made by two people. Each side exceeds 80". Made by two people. Any side 80" or less.
Wall	W	Any size. Intended as a wall hanging.
Innovative/Art	IA	Any size. Original pattern. Contains some non-traditional techniques.
Wearables/Home Décor/ Bags, etc.	WH	Any size.
Group	G	Any size. Made by 3 or more people.
First Entry	FI	Any size. First time a quilter submitted an entry in any quilt show.
Junior	J	Any size. Entrant less than 18 years old. Relative or friend of guild member.
Challenge	C	Total perimeter 125" or less (all 4 sides added together must not exceed 125").

Fons & Porter's "Love of Quilting" Magazine Subscription Offer

Fons & Porter is offering our guild members, once again, a reduced price of \$15 for a One Year subscription to "Love of Quilting". Through a special arrangement with Sulky Threads, we will get a one-year subscription to "Love of Quilting" with FIVE FREE BONUS GIFTS:

**Fons and Porter's Favorite Scrap Quilts Booklet* **Quilting the Quilt Booklet*
**THREE FREE spools of Sulky thread!*

The thread alone is worth \$13 retail. And the quilting booklets are not available in stores. What a deal!

If you are interested in this great deal, make checks out to **Evergreen Piecemakers Quilt Guild** for \$15 and put in the **memo line "Fons & Porter"** for Barb's bookkeeping. Give the check, **with your correct mailing address** to Yvonne Cottell at any guild meeting or send it to Yvonne Cottell (address is in directory). One check will be written by our Treasurer and I will send it into Fons & Porter. They suggest that I send it weekly, so if you are slow in making up your mind, there is always next week. The offer will expire **March 31, 2011**, so don't miss out on this great deal. Your first issue will arrive in 6 – 8 weeks. Thread will arrive shortly thereafter.

If you already get Fons & Porter "Love of Quilting" magazine, you can just **"renew"** your subscription and they will tack on another 6 issues to what you already have paid for. You can track it by your address label which has your expiration date in the corner of the label. **Just add that to the MEMO line** on your check for my bookkeeping. That's all there is to it. I'll do the rest.

Any questions, email me at ycottell3@aol.com or call me. My number is in the directory.
Happy Quilting! Yvonne Cottell

JOYFUL QUILTERS MAKING PILLOWCASES AND PILLOWCASE BAGS

We are happy to announce that our quota of 66 quilts for Royal Family Kids Camp, Issaquah, has already been met! Since we have the time and resources, pillowcase kits have been assembled for guild members to make so each camper will also receive a pillowcase to take their quilt home in.

Joyful Quilters have also cut **50 flannel pillowcase bag kits**, a smaller version of the standard pillowcase, with handles. The Comfy Closet at Mary Bridge Children's Hospital has requested these to put a quilt in along with other items. The Comfy Closet was started several years ago to support children that Mary Bridge sees that are taken into Protective Custody. These children often come here in a nightgown and panties or perhaps straight from school. They seldom have the opportunity to grab their favorite stuffed toy, dolly or blanket. Through the Closet, the child goes to their new safe place with a 'bag' that is put together just for them!

Joyful Quilters meet twice monthly on the Fridays before guild meetings. We begin at 10 am and finish around 2 pm. We usually work on a group project but you are welcome to do whatever you like best. The location is room #11 at Calvary Chapel South, the old Kent Elementary School across from city hall and the police station in Kent. Parking and entrance is at the north end of the building.

On the fourth Sunday of the month we invite you to join us at Trains Quilt Shop in Tacoma for an afternoon of free motion quilting on Donna's two long arm machines. Please reserve your spot by signing up at guild meetings or by e-mail to Judy Gage.



ADVERTISING RATES

Advertising rates are for commercial enterprises

Full Page Ad: \$58.00.....	9" h x 7" w
Half Page Ad: \$32.00.....	4 1/2" h x 7" w or 9" h x 3 1/2" w
Quarter Page Ad: \$18.00.....	4 1/2" h x 3 1/2" w
Eighth Page Ad/Business Card: \$10.00.....	2 1/4" h x 3 1/2" w OR
	\$60.00 for one single ad to be repeated for twelve months.

CLASSIFIED ADVERTISING RATES

Classified advertising is for private non-business individuals.
EP Members: \$.20 word Non-EP members: \$.40 word

INSERTIONS

Pre-Printed, one side: \$25.00 Preprinted, two sides: \$40.00

DEADLINES

Submission of articles • ads • insertions must be received by the 15th of each month

General Retreat Information

The Guild sponsors a number of retreats throughout the year. Retreats are a wonderful way to pamper yourself while working on your own projects (finishing UFOs, starting a new project or working on something else). Retreats are stand-alone events whose costs are fully paid by the participants and require a deposit to hold a spot, with payment of the balance prior to the event.

Each retreat has a different refund policy. Retreats generally fill up fast there are always waiting lists. The Guild treasurer manages any funds associated with the retreats but those funds are not part of the operating budget. Retreats are open to Guild members first and then if there are spaces left to fill by a certain date they are opened to non-members.

Below is a list of some of the current retreats.

Dumas Bay Centre in Federal Way: Enjoy beautiful views of Puget Sound, good lighting, a comfortable quilting room, dinner and breakfast from Friday through the last day of the retreat. You'll have your own private room with half bath. The showers and tub are down the hall. You can enjoy walking the grounds and beach access is nearby. Although you'll feel like you're a million miles from home, you'll have only a short commute.

Several retreats are at Dumas Bay:

Contact the retreat coordinator for more information (exact dates & cost):

February: President's Day weekend,

4 day retreat: Contact **Mimi Miller, 253-549-0709** or miller.mimi@gmail.com

May: Memorial Day weekend,

4 day retreat. Contact **Barbara Frazier 253-813-5647** or barbarafrazier@earthlink.net

September: Labor Day weekend.

4 day retreat. Contact **Linda Zarges, quiltsome@comcast.net** or **Carol Stevens, cinthewoods@comcast.net**

October: Usually the 3rd weekend.

3 day retreat. Contact **Lou Sawyer, dakotaboos@msn.com** (*Note change*)

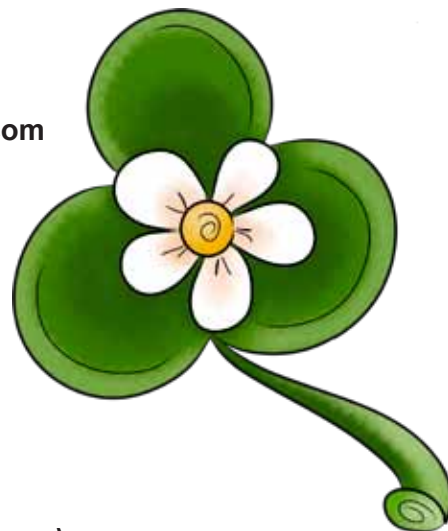
December: Usually the 1st weekend.

3 day retreat. Contact **Sandy Burroughs, burroughs_s@comcast.net**

Other retreats:

Camp Huston at Gold Bar: The Guild has been going to Camp Huston the 1st week in May for over 25 years. Currently full, contact **Mary Allen, marynbob@juno.com**, if you are interested in being put onto the wait list.

Seabeck on Hood Canal – Held in October, currently full, contact **Dana Ekblad, danaekblad@comcast.net**, if you are interest in being put onto the wait list.



C'mon--GIVE YOURSELF A TREAT!